



IDAHO STATE POLICE FORENSIC SERVICES

700 South Stratford Drive, Ste 125

Meridian, ID 83642-6202

Phone: (208) 884-7170

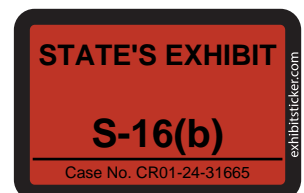
Fax: (208) 884-7197

FORENSIC BIOLOGY REPORT

Case Agency(s) : MOSCOW POLICE DEPARTMENT	Agency Case No(s): 22-M09903	Laboratory Case No.: M2022-4843
Date(s) of Offense: 11/13/2022	Investigating Officer(s): Dustin Blaker	Report No.: 16
Date Evidence Accepted: 12/28/2022	Analyst: Katherine Dace	
Case Name(s): Victim - MADISON M MOGEN Victim - XANA A KERNODLE Victim - ETHAN J CHAPIN Victim - KAYLEE J GONCALVES		

EVIDENCE DESCRIPTION:

- Item 79: Two band-aids and two paper peels from 127 Parkside Ave, Blakeslee, PA
 - Item 79.1: Cutting from one band-aid from 127 Parkside Ave, Blakeslee, PA
- Item 80: Black straw from 127 Parkside Ave, Blakeslee, PA
 - Item 80.1: Swab of black straw from 127 Parkside Ave, Blakeslee, PA
- Item 81: Two pink earplugs from 127 Parkside Ave, Blakeslee, PA
 - Item 81.1: Swab of two pink earplugs from 127 Parkside Ave, Blakeslee, PA
- Item 82: Five lollipop sticks & two wrappers from 127 Parkside Ave, Blakeslee, PA
 - Item 82.1: Lollipop stick one
 - Item 82.1.1: Cutting from lollipop stick 1 from 127 Parkside Ave, Blakeslee, PA
 - Item 82.2: Lollipop stick two
 - Item 82.2.1: Cutting from lollipop stick 2 from 127 Parkside Ave, Blakeslee, PA
- Item 82.3: Lollipop stick three
- Item 82.4: Lollipop stick four
- Item 82.5: Lollipop stick five
- Item 83: Nail clippers from 127 Parkside Ave, Blakeslee, PA
 - Item 83.1: Swab of stain on nail clippers from 127 Parkside Ave, Blakeslee, PA
- Item 84: Eight ear plugs from 127 Parkside Ave, Blakeslee, PA
- Item 85: Used napkins from 127 Parkside Ave, Blakeslee, PA
- Item 86: Six green CVS flossers from 127 Parkside Ave, Blakeslee, PA
 - Item 86.1: Cutting from one flosser from 127 Parkside Ave, Blakeslee, PA
- Item 87: Three Q-tip style swabs from 127 Parkside Ave, Blakeslee, PA
 - Item 87.1: Cutting from one Q-tip style swab from 127 Parkside Ave, Blakeslee, PA
- Item 88: Dunkin Donut cup & lid with straw holder (no straw) and empty Stevia packet from 127 Parkside Ave, Blakeslee, PA
- Item 89: Orange and pink straw from 127 Parkside Ave, Blakeslee, PA
 - Item 89.1: Swab of orange and pink straw 127 Parkside Ave, Blakeslee, PA
- Item 90: Flossers from 127 Parkside Ave, Blakeslee, PA
- Item 91: Q-Tips from 127 Parkside Ave, Blakeslee, PA



Item 92: Lollipop stick from 127 Parkside Ave, Blakeslee, PA
Item 93: Dunkin cup with lid from 127 Parkside Ave, Blakeslee, PA
Item 93.1: Swab of cup lid from 127 Parkside Ave, Blakeslee, PA
Item 94: Popsicle sticks from 127 Parkside Ave, Blakeslee, PA
Item 95: Eleven water bottles and four caps from 127 Parkside Ave, Blakeslee, PA
Item 95.1: Bowl and Basket water bottle
Item 95.2: Bowl and Basket water bottle
Item 95.3: Bowl and Basket water bottle with cap
Item 95.4: Bowl and Basket water bottle with cap
Item 95.5: Bowl and Basket water bottle with cap
Item 95.5.1: Swab of Bowl and Basket water bottle and cap from 127 Parkside Ave, Blakeslee, PA
Item 95.6: Bowl and Basket water bottle with cap
Item 95.7: Crumpled Bowl and Basket water bottle with cap
Item 95.8: Crumpled Bowl and Basket water bottle with cap
Item 95.9: Poland Springs water bottle with cap
Item 95.9.1: Swab of Poland Spring water bottle and cap from 127 Parkside Ave, Blakeslee, PA
Item 95.10: Crumpled Poland Springs water bottle
Item 95.11: Crumpled Poland Springs water bottle with cap
Item 95.12: Four loose caps
Item 96: Crumpled Bowl and Basket water bottle and cap from 127 Parkside Ave, Blakeslee, PA
Item 96.1: Swab of Bowl and Basket water bottle and cap from 127 Parkside Ave, Blakeslee, PA

CONCLUSIONS AND INTERPRETATIONS:

Results from presumptive chemical tests performed on Item 83 indicated the presence of blood.

Items 79, 82.1, 82.2, 86, and 87 were examined only for the purpose of sampling for DNA analysis.

Items 80, 81, 89, 93, 95.5, 95.9, and 96 were swabbed for DNA collection.

Items 88, 95.1 through 95.4, 95.6 through 95.8, and 95.10 through 95.12 were visually examined, however no further analysis was performed.

Items 84, 85, 90, 91, 92, and 94 were not examined.

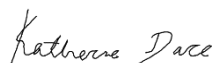
DISPOSITION OF EVIDENCE:

Items 79.1, 80.1, 81.1, 82.1.1, 82.2.1, 83.1, 86.1, 87.1, 89.1, 93.1, 95.5.1, 95.9.1, and 96.1 were forwarded for DNA analysis. Results will follow in a separate report. All remaining items have been returned to the main laboratory evidence vault pending DNA analysis.

REMARKS:

The descriptions, conclusions and interpretations stated above apply to the sample(s) as received.

I declare under penalty of perjury pursuant to the law of the State of Idaho that the foregoing is true and correct.



Katherine Dace / Forensic Scientist

Laboratory Case Number: **M2022-4843**

Report No.:
16

Issue Date: **12/28/2022**

BIOLOGY ANALYSIS NOTES

Case: M2022-4843

Examiner: Katherine Dace

Dates of analysis: 12/28/2022 to 12/28/2022

General Analysis

Item 79-Two band-aids and two paper peels from 127 Parkside Ave, Blakeslee, PA

<u>Task/Test</u>	<u>Value</u>
Date of Analysis	12/28/2022
Seal	evidence tape
Initialed	yes
Packaging	evidence envelope
Package Labeling	M2022-4843...79...1A...two (2) band-aids (agency case # not listed)
Contents Description/Notes	Contains two band aids stuck together and two paper strips (paper strips not examined or itemized). Band-aids separated for photo. No blood-like staining noted. ~5mm ² cutting taken from fabric of one band aid for DNA (79.1). Other band aid not sampled at this time. Repack, ets.

Item 79.1-Cutting from one band-aid from 127 Parkside Ave, Blakeslee, PA

<u>Task/Test</u>	<u>Value</u>
Retained	Yes
Item Source	Q

Item 80-Black straw from 127 Parkside Ave, Blakeslee, PA

<u>Task/Test</u>	<u>Value</u>
Date of Analysis	12/28/2022
Seal	evidence tape
Initialed	yes
Packaging	evidence envelope
Package Labeling	M2022-4843...80...1B...straw (agency case # not listed)
Contents Description/Notes	Contains one black straw. Some possible food-like staining present, more heavily concentrated on end 1 of straw. Both ends of straw swabbed together with one swab (80.1). Entire swab cut for DNA. Repack, ets.

Item 80.1-Swab of black straw from 127 Parkside Ave, Blakeslee, PA

<u>Task/Test</u>	<u>Value</u>
Retained	Yes
Item Source	Q

Item 81-Two pink earplugs from 127 Parkside Ave, Blakeslee, PA

<u>Task/Test</u>	<u>Value</u>
Date of Analysis	12/28/2022
Seal	evidence tape
Initialed	Yes
Packaging	evidence envelope
Package Labeling	M2022-4843...81...1C...two (2) pink ear plugs...22-M09903
Contents Description/Notes	Contains two pink ear plugs. Items have debris stuck to outside (possible coffee grounds). Entire surface area of both ear plugs swabbed together with one swab (81.1). Entire swab cut for DNA. Repack, ets.

BIOLOGY ANALYSIS NOTES

Case: M2022-4843

Examiner: Katherine Dace

Dates of analysis: 12/28/2022 to 12/28/2022

Item 81.1-Swab of two pink earplugs from 127 Parkside Ave, Blakeslee, PA

<u>Task/Test</u>	<u>Value</u>
Retained	Yes
Item Source	Q

Item 82-Item 82: Five lollipop sticks & two wrappers from 127 Parkside Ave, Blakeslee, PA

Item 82.1: Lollipop stick one

Item 82.2: Lollipop stick two

Item 82.3: Lollipop stick three

Item 82.4: Lollipop stick four

Item 82.5: Lollipop stick five

<u>Task/Test</u>	<u>Value</u>
Date of Analysis	12/28/2022
Seal	evidence tape
Initialed	yes
Packaging	evidence envelope
Package Labeling	M2022-4843...82...1D...lollipop sticks & wrappers...22-M09903
Contents Description/Notes	Contains 5 lollipop sticks and two Starburst wrappers (wrappers not examined). Sticks subitemed 82.1 through 82.5. One stick has apparent hair stuck to one end (left in place). Cuttings taken from 82.1 and 82.2 (designated 82.1.1 and 82.2.1 respectively). Remaining sticks not examined. Sticks marked 1-5 with marker. Repack, etc.

Item 82.1.1-Cutting from lollipop stick 1 from 127 Parkside Ave, Blakeslee, PA

<u>Task/Test</u>	<u>Value</u>
Retained	Yes
Item Source	Q

Item 82.2.1-Cutting from lollipop stick 2 from 127 Parkside Ave, Blakeslee, PA

<u>Task/Test</u>	<u>Value</u>
Retained	Yes
Item Source	Q

Item 83-Nail clippers from 127 Parkside Ave, Blakeslee, PA

<u>Task/Test</u>	<u>Value</u>
Date of Analysis	12/28/2022
Seal	evidence tape
Initialed	yes
Packaging	evidence envelope
Package Labeling	M2022-4843...83...1D...nail clippers...22-M09903
Contents Description/Notes	Contains one pair of silver nail clippers, Has yellow and white staining on clipping end, staining flakes off very easily. Also has some reddish staining on handle end, staining is OTOL +. All of staining swabbed with one swab (83.1). Entire swab consumed for DNA. Clipping end not swabbed at this time. Repack, etc.
O-Tol	positive

Item 83.1-Swab of stain on nail clippers from 127 Parkside Ave, Blakeslee, PA

BIOLOGY ANALYSIS NOTES

Case: M2022-4843

Examiner: Katherine Dace

Dates of analysis: 12/28/2022 to 12/28/2022

<u>Task/Test</u>	<u>Value</u>
Retained	Yes
Item Source	Q

Item 84-Eight ear plugs from 127 Parkside Ave, Blakeslee, PA

<u>Task/Test</u>	<u>Value</u>
Date of Analysis	12/28/2022
Seal	evidence tape
Initialed	yes
Packaging	evidence envelope
No Exam	X
Package Labeling	M2022-4843...84...1D...eight (8) ear plugs...22-M09903

Item 85-Used napkins from 127 Parkside Ave, Blakeslee, PA

<u>Task/Test</u>	<u>Value</u>
Date of Analysis	12/28/2022
Seal	evidence tape
Initialed	yes
Packaging	evidence envelope
No Exam	X
Package Labeling	M2022-4843...85...2B...used napkin...22-M09903

Item 86-Six green CVS flossers from 127 Parkside Ave, Blakeslee, PA

<u>Task/Test</u>	<u>Value</u>
Date of Analysis	12/28/2022
Seal	evidence tape
Initialed	yes
Packaging	evidence envelope
Package Labeling	M2022-4843...86...2B...Flosser...22-M09903
Contents Description/Notes	Contains 6 green CVS brand flossers. Flossers appear used. Floss cut from one flosser (86.1). Remaining flossers not examined. Repack, ets.

Item 86.1-Cutting from one flosser from 127 Parkside Ave, Blakeslee, PA

<u>Task/Test</u>	<u>Value</u>
Retained	Yes
Item Source	Q

Item 87-Three Q-tip style swabs from 127 Parkside Ave, Blakeslee, PA

<u>Task/Test</u>	<u>Value</u>
Date of Analysis	12/28/2022
Seal	evidence tape
Initialed	yes
Packaging	evidence envelope
Package Labeling	M2022-4843...87...2B...Q-tip...22-M09903
Contents Description/Notes	Contains 3 Q-tip style swabs w/yellow-brown staining. One apparent hair is present, left in place. One end of one swab cut for DNA (87.1). repack, ets.

Item 87.1-Cutting from one Q-tip style swab from 127 Parkside Ave, Blakeslee, PA

BIOLOGY ANALYSIS NOTES

Case: M2022-4843

Examiner: Katherine Dace

Dates of analysis: 12/28/2022 to 12/28/2022

<u>Task/Test</u>	<u>Value</u>
Retained	Yes
Item Source	Q

Item 88-Dunkin Donut cup & lid with straw holder (no straw) and empty Stevia packet from 127 Parkside Ave, Blakeslee, PA

<u>Task/Test</u>	<u>Value</u>
Date of Analysis	12/28/2022
Seal	evidence tape
Initialed	yes
Packaging	brown paper bag
Package Labeling	M2022-4843...88...2C...Dunkin donut cup with lid..22-M09903
Contents Description/Notes	Contains one Dunkin cup, separate plastic lid w/straw hole, and one empty Stevia packet. Lid is designed to be used with straw and not drank from directly. Item not sampled at this time. Repack, ets.

Item 89-Orange and pink straw from 127 Parkside Ave, Blakeslee, PA

<u>Task/Test</u>	<u>Value</u>
Date of Analysis	12/28/2022
Seal	evidence tape
Initialed	yes
Packaging	evidence envelope
Package Labeling	M2022-4843...89...2C...straw...22-M09903
Contents Description/Notes	Contains one orange and pink straw. Has apparent coffee grounds on outside. Some food-like staining noted on surface. Both ends swabbed with one swab (89.1). Entire swab cut for DNA. Repack, ets.

Item 89.1-Swab of orange and pink straw 127 Parkside Ave, Blakeslee, PA

<u>Task/Test</u>	<u>Value</u>
Retained	Yes
Item Source	Q

Item 90-Flossers from 127 Parkside Ave, Blakeslee, PA

<u>Task/Test</u>	<u>Value</u>
Date of Analysis	12/28/2022
Seal	evidence tape
Initialed	yes
Packaging	evidence envelope
No Exam	X
Package Labeling	M2022-4843...90...3B...Flossers...22-M09903

Note: Envelope was placed in plastic sleeve at intake due to wetness of envelope

Item 91-Q-Tips from 127 Parkside Ave, Blakeslee, PA

<u>Task/Test</u>	<u>Value</u>
Date of Analysis	12/28/2022
Seal	evidence tape
Initialed	yes

BIOLOGY ANALYSIS NOTES

Case: M2022-4843 Examiner: Katherine Dace Dates of analysis: 12/28/2022 to 12/28/2022

Packaging	evidence envelope
No Exam	X
Package Labeling	M2022-4843...91...3C...Qtip...22-M09903

Item 92-Lollipop stick from 127 Parkside Ave, Blakeslee, PA

<u>Task/Test</u>	<u>Value</u>
Date of Analysis	12/28/2022
Seal	evidence tape
Initialed	yes
Packaging	evidence envelope
No Exam	X
Package Labeling	M2022-4843...92...3C...lollipop stick...22-M09903

Item 93-Dunkin cup with lid from 127 Parkside Ave, Blakeslee, PA

<u>Task/Test</u>	<u>Value</u>
Date of Analysis	12/28/2022
Seal	evidence tape
Initialed	yes
Packaging	brown paper bag
Package Labeling	M2022-4843...93...3C..Dunkin cup with lid...22-M09903
Contents Description/Notes	Contains one Dunkin cup with plastic lid. Plastic lid has mouth area and lid seal. Mouth area of lid and underside of lid seal swabbed with one swab. Entire swab cut for DNA (93.1). Repack, ets.

Item 93.1-Swab of cup lid from 127 Parkside Ave, Blakeslee, PA

<u>Task/Test</u>	<u>Value</u>
Retained	Yes
Item Source	Q

Item 94-Popsicle sticks from 127 Parkside Ave, Blakeslee, PA

<u>Task/Test</u>	<u>Value</u>
Date of Analysis	12/28/2022
Seal	evidence tape
Initialed	yes
Packaging	evidence envelope
No Exam	X
Package Labeling	M2022-4843...94...4B...popsicle sticks...22-M09903

BIOLOGY ANALYSIS NOTES

Case: M2022-4843

Examiner: Katherine Dace

Dates of analysis: 12/28/2022 to 12/28/2022

Item 95-Item 95: Eleven water bottles and four caps from 127 Parkside Ave, Blakeslee, PA

- Item 95.1: Bowl and Basket water bottle
- Item 95.2: Bowl and Basket water bottle
- Item 95.3: Bowl and Basket water bottle with cap
- Item 95.4: Bowl and Basket water bottle with cap
- Item 95.5: Bowl and Basket water bottle with cap
- Item 95.6: Bowl and Basket water bottle with cap
- Item 95.7: Crumpled Bowl and Basket water bottle with cap
- Item 95.8: Crumpled Bowl and Basket water bottle with cap
- Item 95.9: Poland Springs water bottle with cap
- Item 95.10: Crumpled Poland Springs water bottle
- Item 95.11: Crumpled Poland Springs water bottle with cap
- Item 95.12: Four loose caps

<u>Task/Test</u>	<u>Value</u>
Date of Analysis	12/28/2022
Seal	evidence tape
Initialed	yes
Packaging	brown paper bag
Package Labeling	M2022-4843...95..3B..water bottles and caps...22-M09903
Contents Description/Notes	Contains 11 water bottles: 2 Poland Springs brand water bottles w/cap on, 1 Poland Springs brand water bottle w/no cap on, 6 Bowl and Basket brand water bottles w/cap on, and 2 Bowl and Basket brand water bottles w/no cap on. 4 loose caps also present in bag. Bottles itemized as 95.1 through 95.11. Caps itemized as 95.12. Items 95.5 and 95.9 selected for sampling. For each, mouth area of bottle and inside of cap swabbed with one swab (95.5.1 and 95.9.1 respectively). Each swab cut for DNA. All water bottles marked with item # on bottom. Loose caps not labeled. Repack, ets.

Item 95.5.1-Swab of Bowl and Basket water bottle and cap from 127 Parkside Ave, Blakeslee, PA

<u>Task/Test</u>	<u>Value</u>
Retained	Yes
Item Source	Q

Item 95.9.1-Swab of Poland Spring water bottle and cap from 127 Parkside Ave, Blakeslee, PA

<u>Task/Test</u>	<u>Value</u>
Retained	Yes
Item Source	Q

Item 96-Crumpled Bowl and Basket water bottle and cap from 127 Parkside Ave, Blakeslee, PA

<u>Task/Test</u>	<u>Value</u>
Date of Analysis	12/28/2022
Seal	evidence tape
Initialed	yes
Packaging	evidence envelope
Package Labeling	M2022-4843...96...4E..water bottle...22-M09903
Contents Description/Notes	Contains one crumpled Bowl and Basket brand water bottle w/cap. Appears to have coffee grounds on outer surface. Mouth area of bottle and inside of cap swabbed w/one swab (96.1). Entire swab cut for DNA. repack, ets.

BIOLOGY ANALYSIS NOTES

Case: M2022-4843

Examiner: Katherine Dace

Dates of analysis: 12/28/2022 to 12/28/2022

Item 96.1-Swab of Bowl and Basket water bottle and cap from 127 Parkside Ave, Blakeslee, PA

<u>Task/Test</u>	<u>Value</u>
Retained	Yes
Item Source	Q

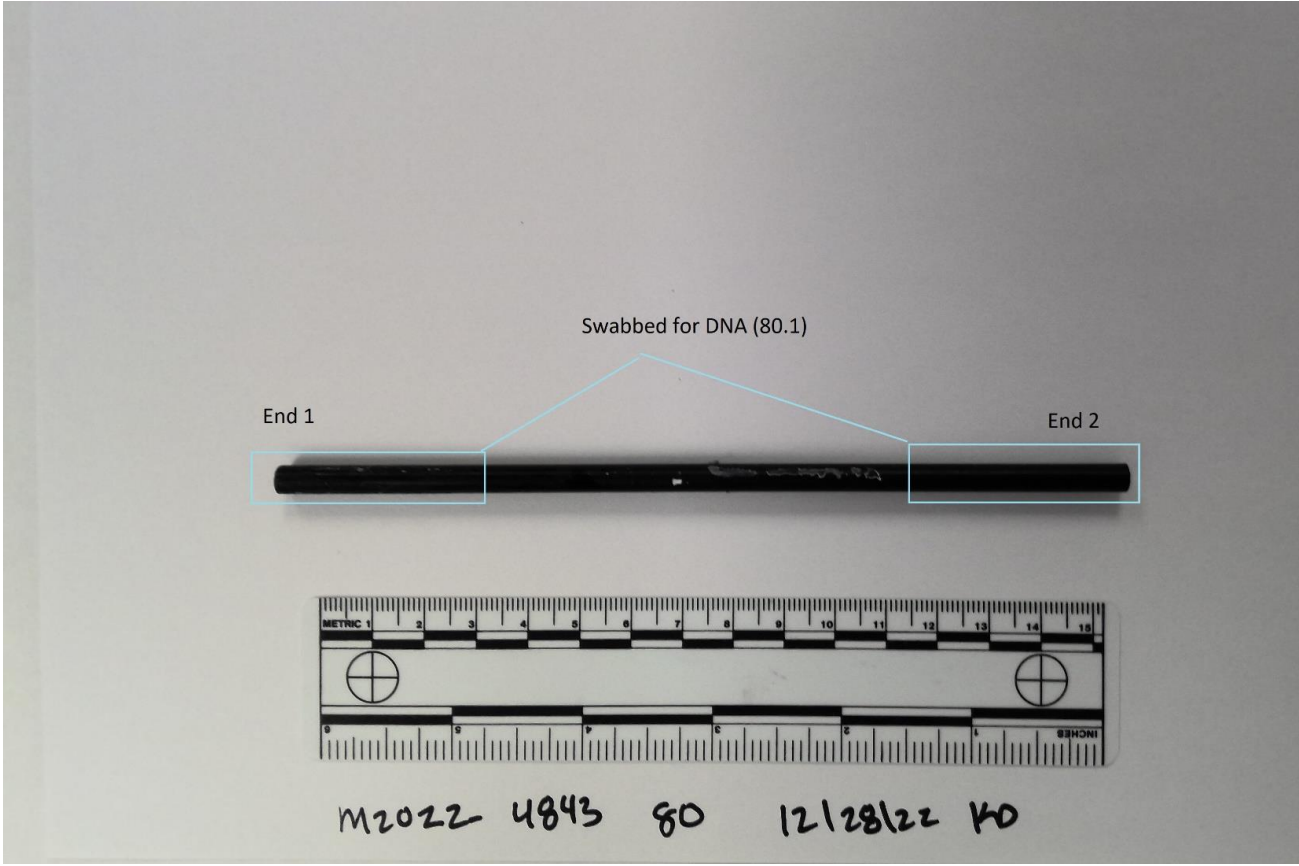
Screening Analysis Controls

<u>Task/Test</u>	<u>Value</u>
Date	12/28/2022
O-Tol Lot#	O-TOL051822
O-Tol(+)	blue/green
O-Tol(-)	no reaction

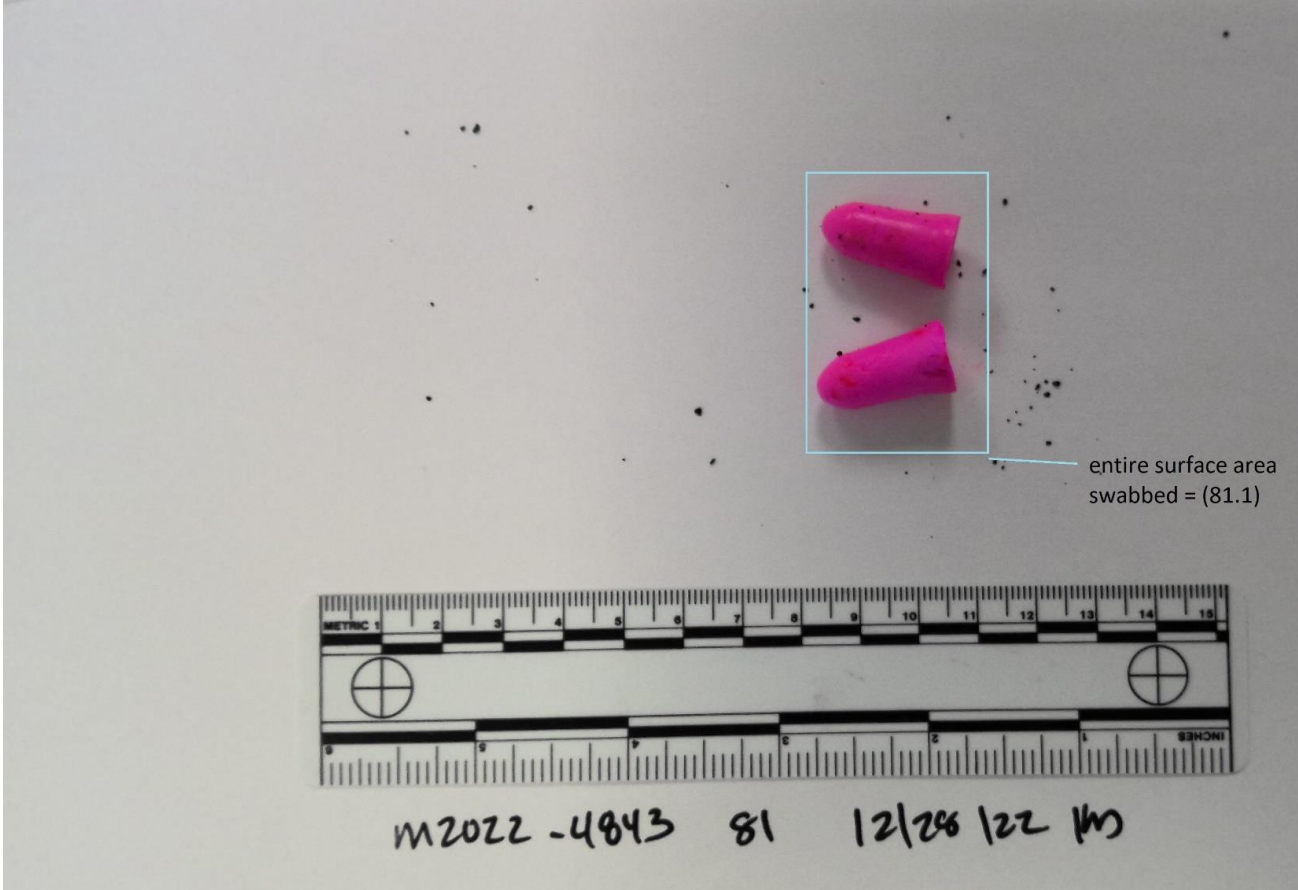
KD



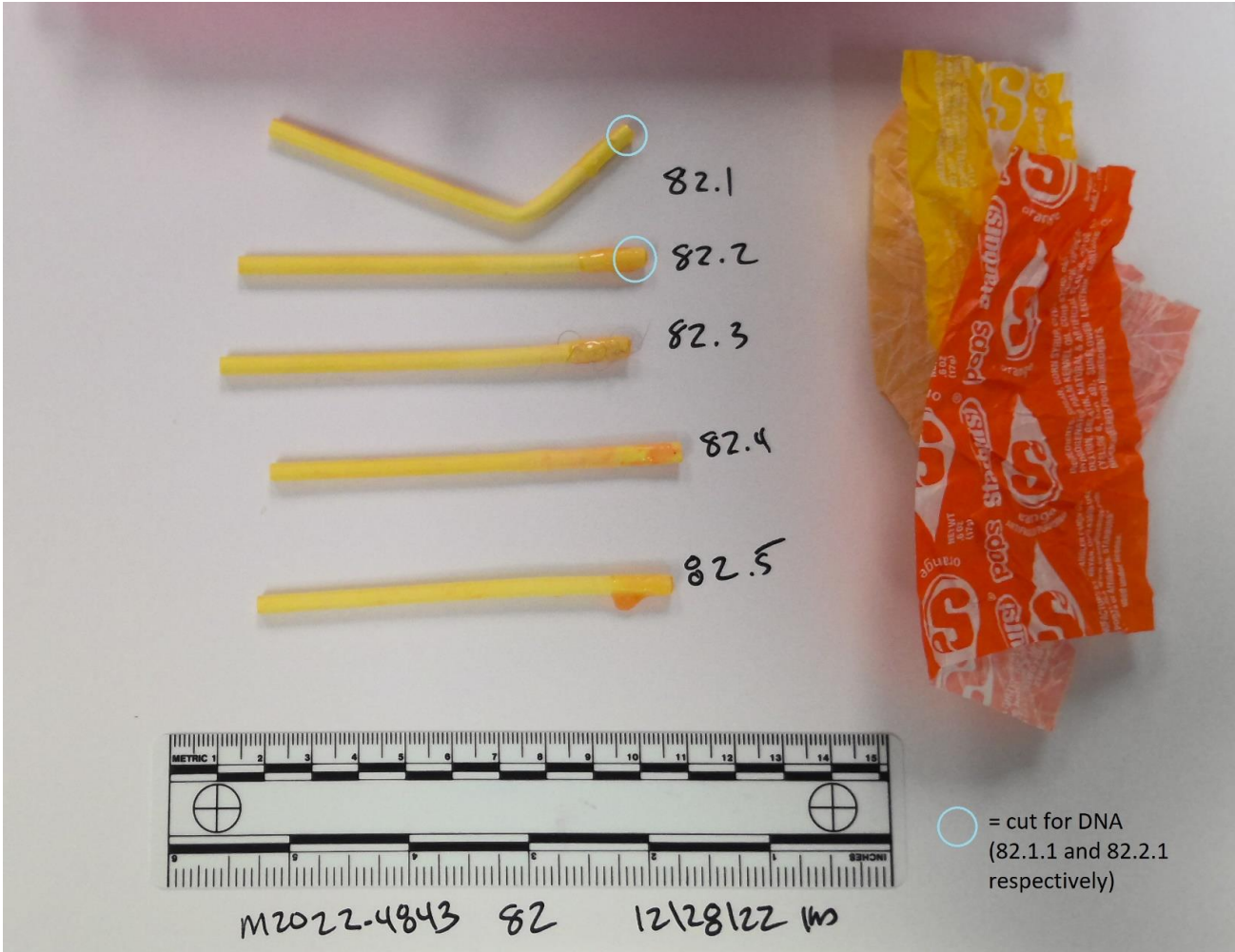
KD



KD



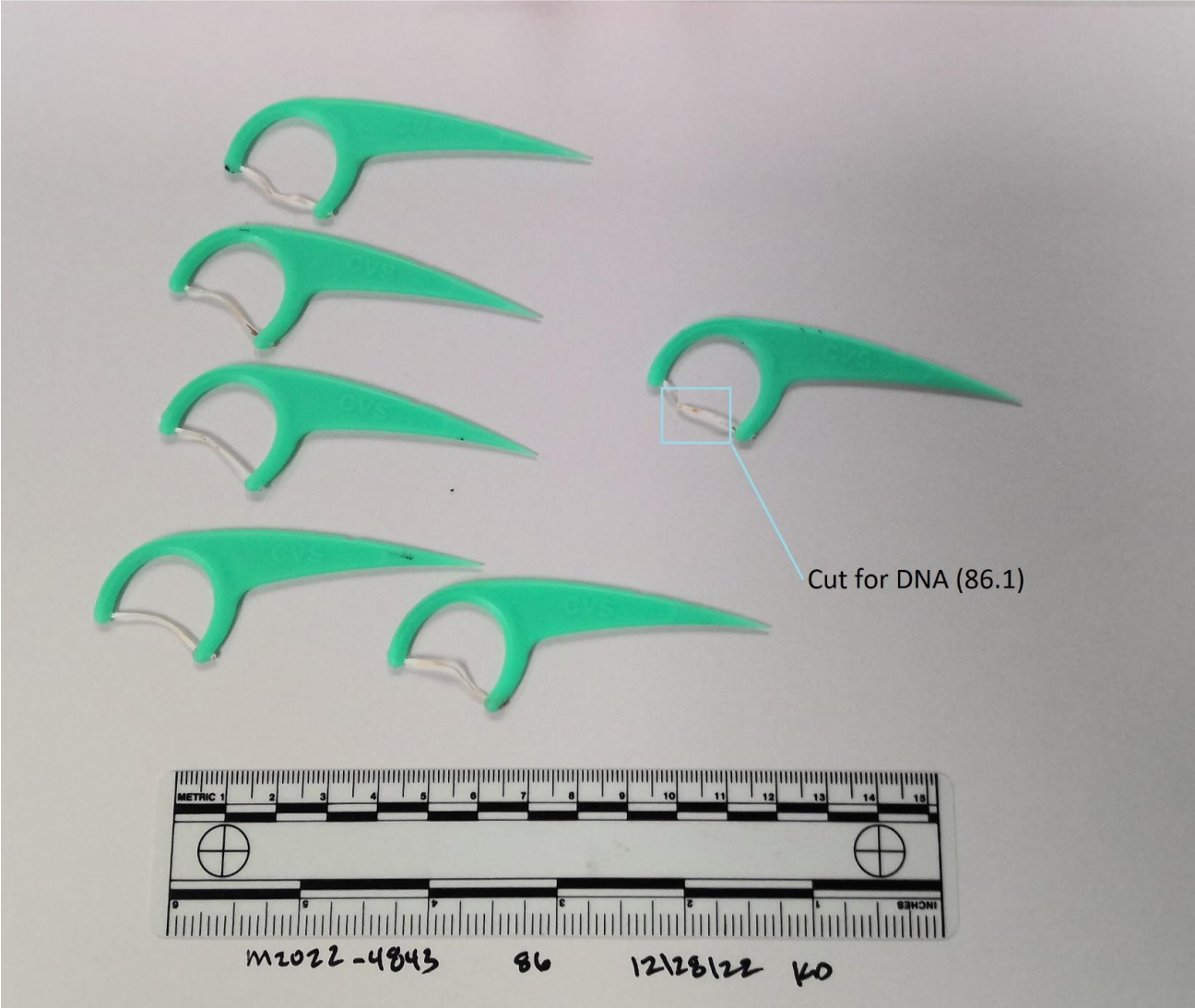
KD



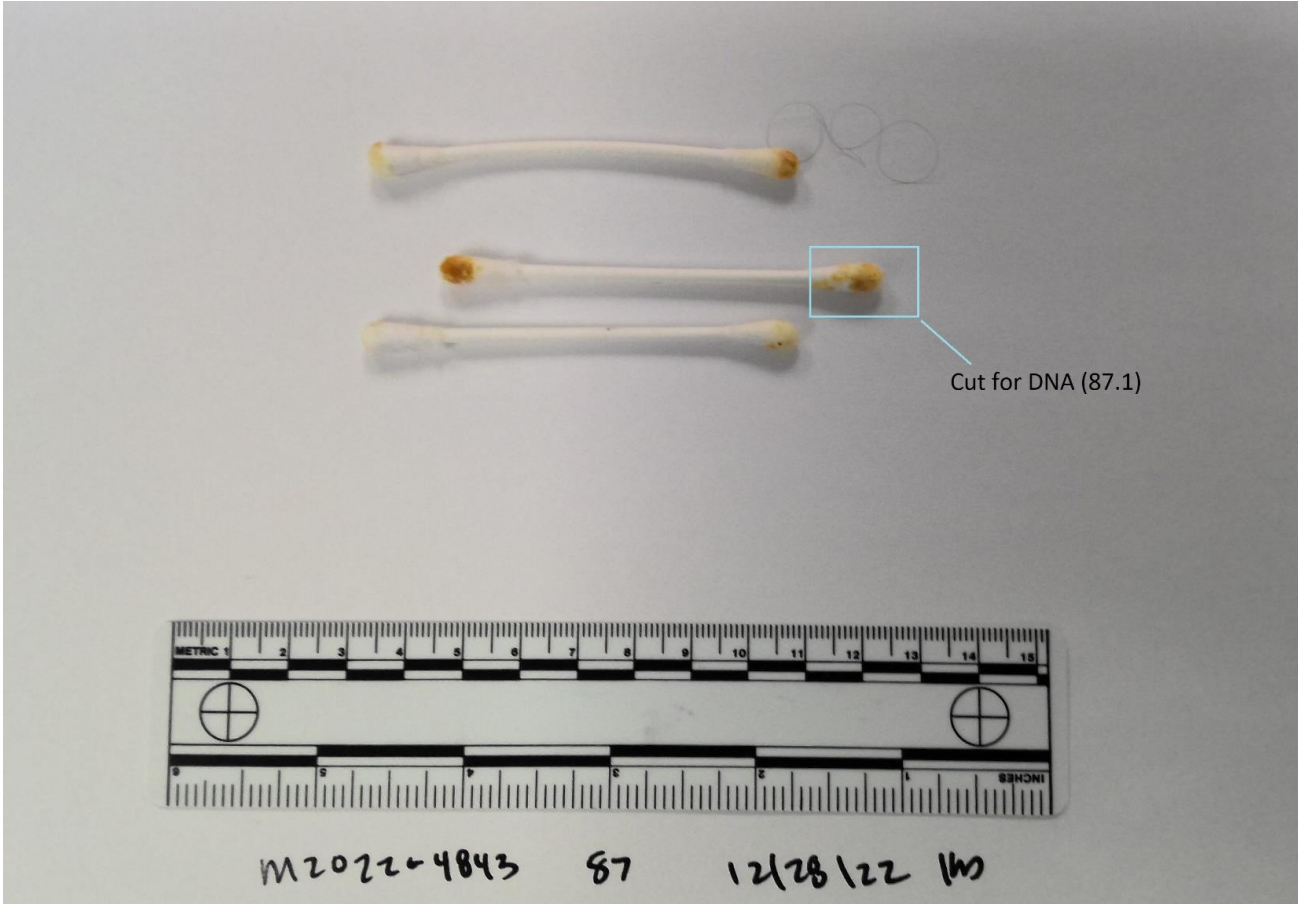
130



KO



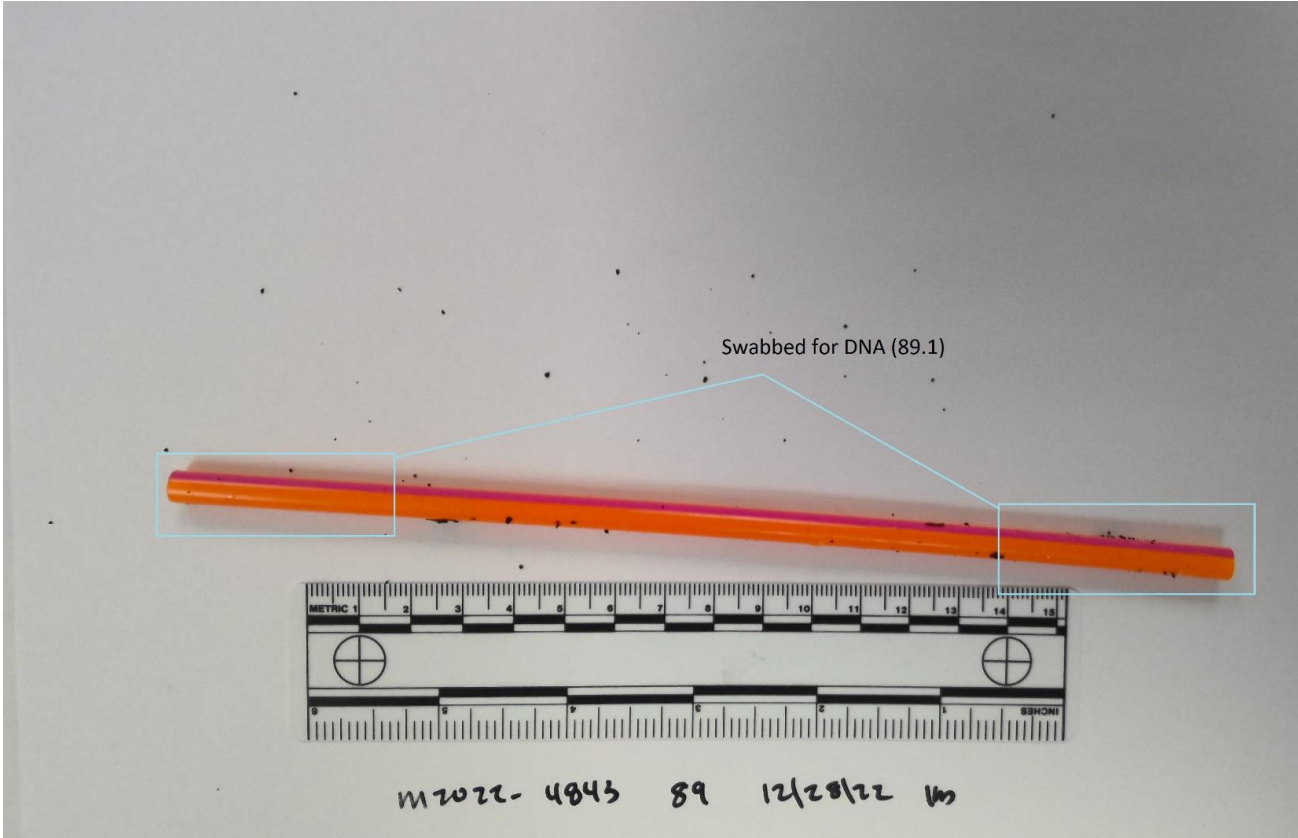
KD



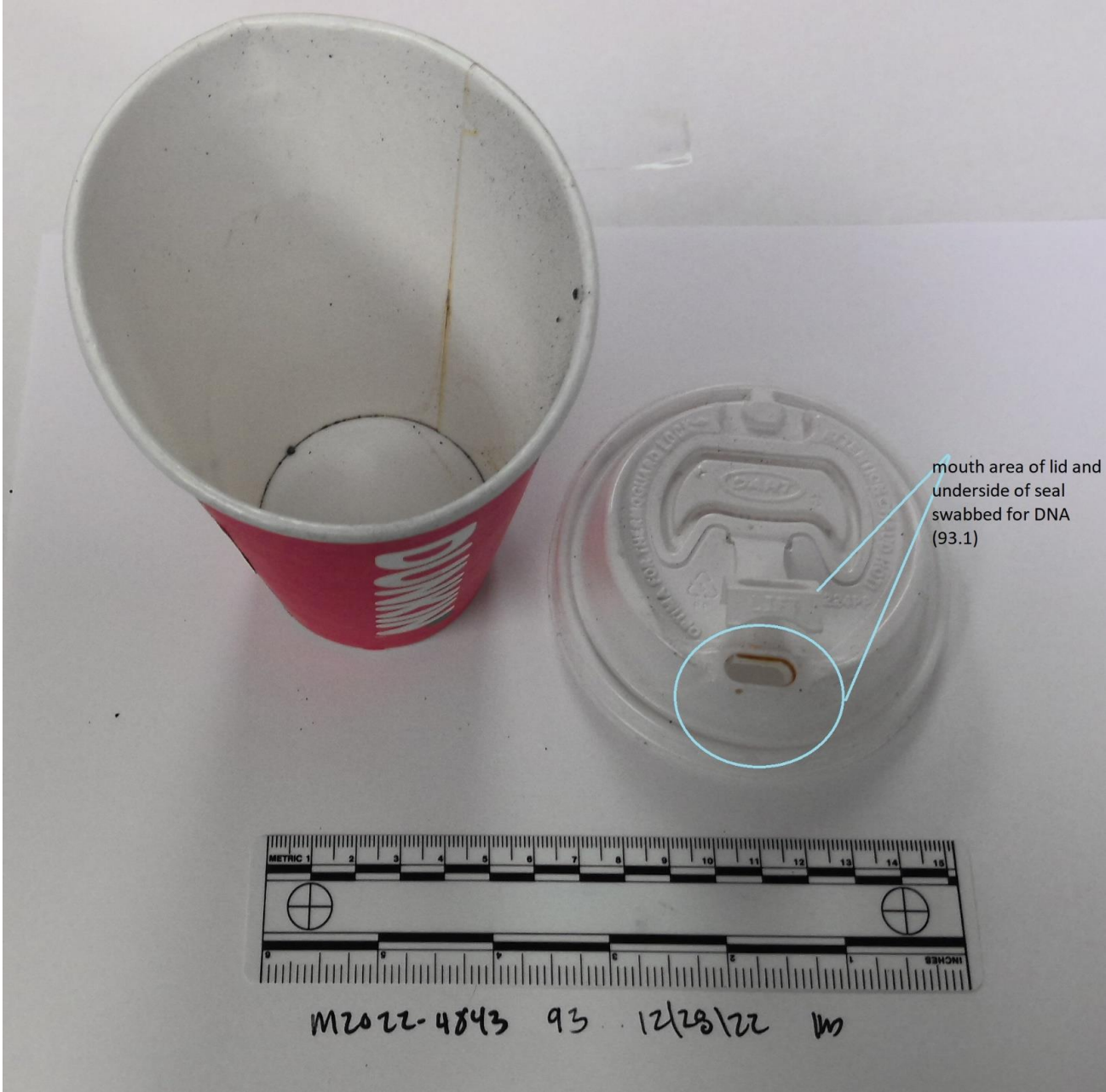
KD



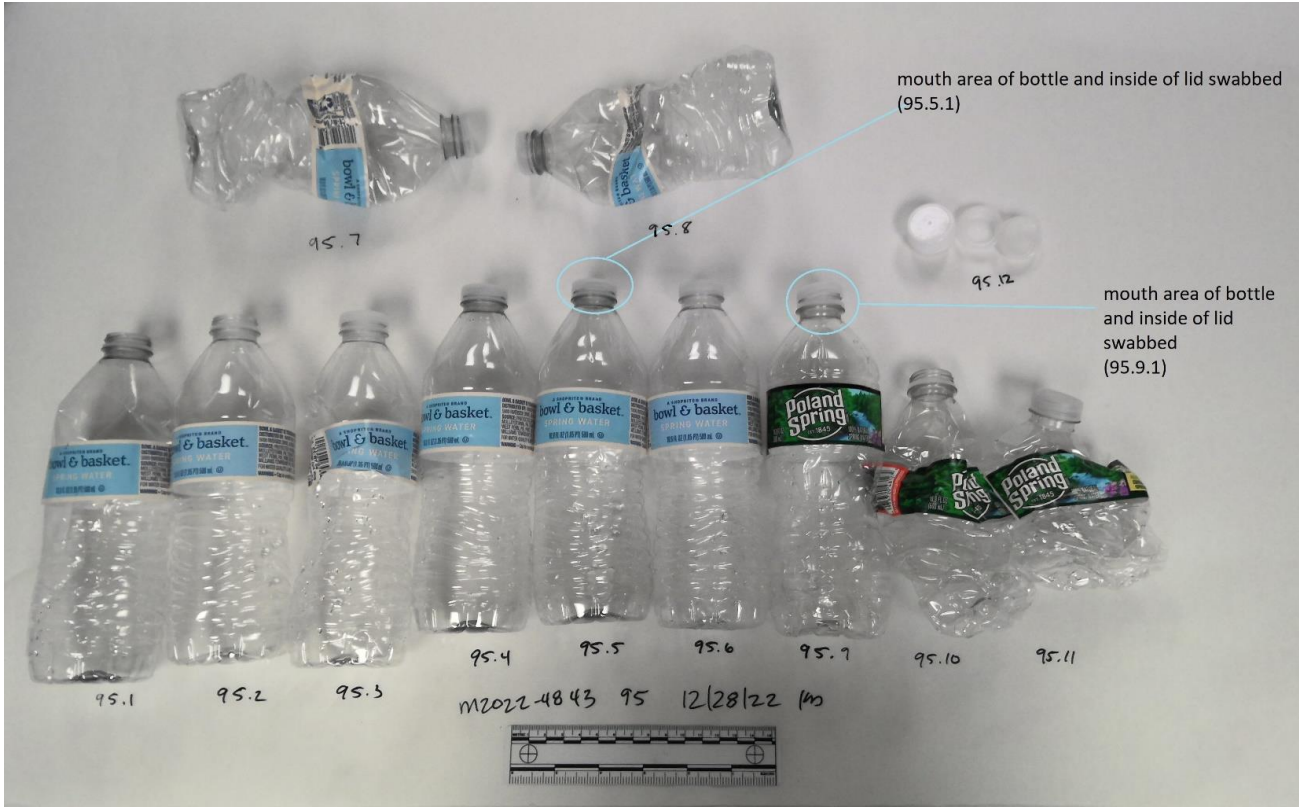
KD



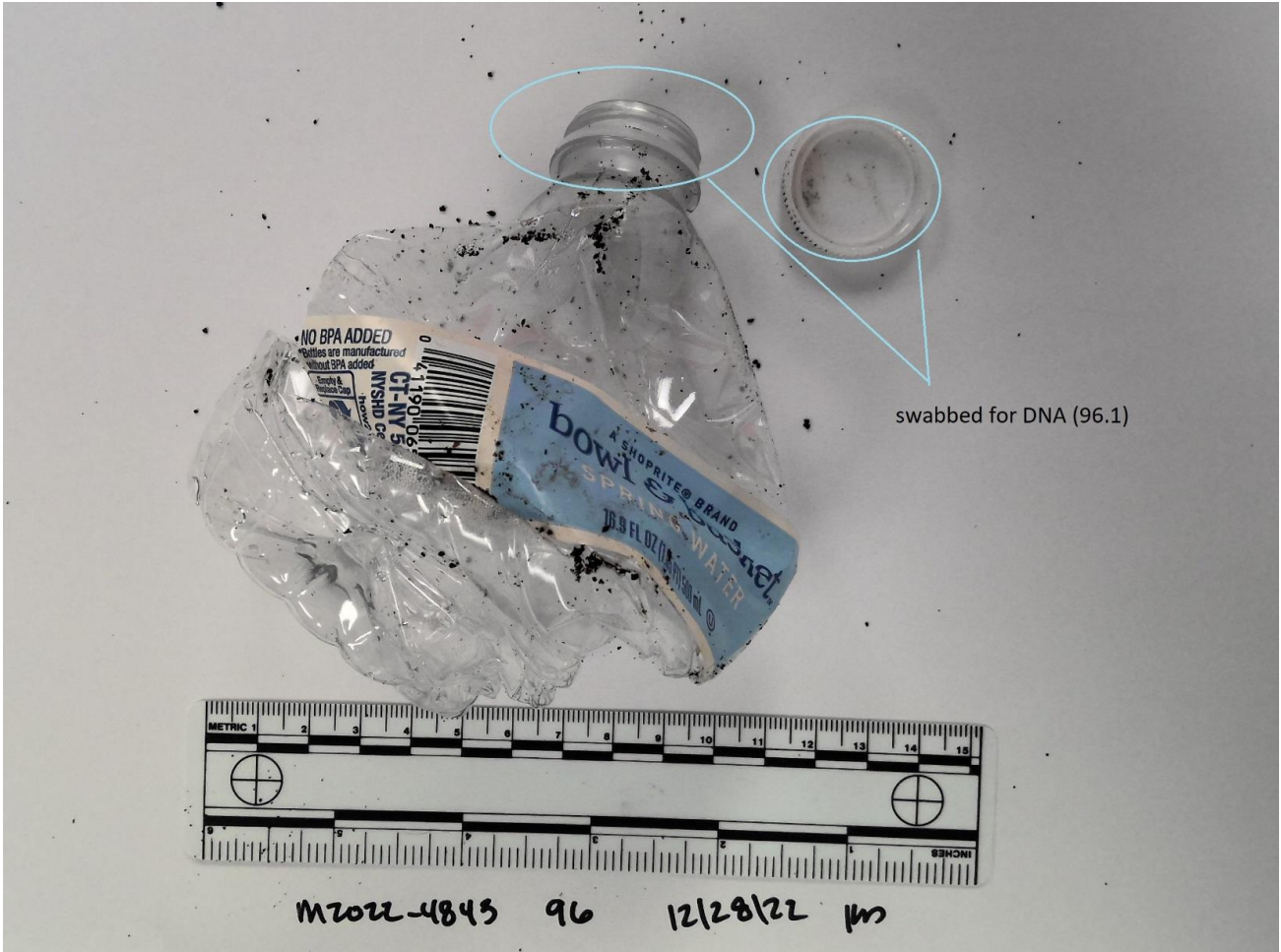
KD



KD



KD





IDAHO STATE POLICE FORENSIC SERVICES

700 South Stratford Drive, Ste 125

Meridian, ID 83642-6202

Phone: (208) 884-7170

Fax: (208) 884-7197

FORENSIC DNA REPORT

Case Agency(s) : MOSCOW POLICE DEPARTMENT	Agency Case No(s).: 22-M09903	Laboratory Case No.: M2022-4843
Date(s) of Offense: 11/13/2022	Investigating Officer(s): Dustin Blaker	Report No.: 6
Date Evidence Accepted: 11/22/2022	Analyst: Katherine Dace	
<u>Case Name(s):</u> Suspect - JACK S DUCOEUR Subject - BETHANY G FUNKE Subject - DYLAN M MORTENSEN Subject - JOSE A CRUZ Victim - MADISON M MOGEN Victim - XANA A KERNODLE Victim - ETHAN J CHAPIN Victim - KAYLEE J GONCALVES		

EVIDENCE DESCRIPTION:

Item 33: Cigarette butt to be used as a secondary reference sample for Jose Cruz

Item 34: Cigarette butt to be used as a secondary reference sample for Jose Cruz

Item 35: DNA Extracts from Items 33 and 34

CONCLUSIONS AND INTERPRETATIONS:

Deoxyribonucleic Acid (DNA) Analysis, employing the Polymerase Chain Reaction (PCR), was used to generate a Short Tandem Repeat (STR) profile from a portion of Item 33 and Item 34. ¹

The DNA profiles obtained from Items 33 and 34 were determined to be from the same male.

Jose Cruz is not the source of the DNA profile previously obtained from Item 1.1 (See Report #4, Dated 11/20/2022).

The DNA profile previously obtained from Item 1.4 (See Report #4, Dated 11/20/2022) indicates a mixture of DNA with a major profile. Assuming a two person mixture, Jose Cruz is excluded as a contributor to this DNA mixture profile.

Further interpretation may be performed upon submission of a known reference sample from any additional developed suspect(s).

FOOTNOTES

¹ Loci Examined: Amelogenin, D3S1358, D1S1656, D2S441, D10S1248, D13S317, Penta E, D16S539, D18S51, D2S1338, CSF1PO, Penta D, TH01, vWA, D21S11, D7S820, D5S818, TPOX, DYS391, D8S1179, D12S391, D19S433, FGA, and D22S1045.

DISPOSITION OF EVIDENCE:

All items have been returned to the main laboratory evidence vault for return to the submitting agency.

REMARKS:

The descriptions, conclusions and interpretations stated above apply to the sample(s) as received.

I declare under penalty of perjury pursuant to the law of the State of Idaho that the foregoing is true and correct.

Katherine Dace

Katherine Dace / Forensic Scientist

Issue Date: **11/23/2022**

